

Microbial Services

Your CDMO partner for life

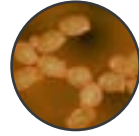
For a range of microbial hosts, we create flexible, modular plans to take you from strain selection to process development to commercialization. Across our global network we provide experience in difficult-to-express proteins, potent APIs, and various PEGylation/conjugation chemistries and deliver scalable, robust processes.

Extensive Level of Experience in Microbial CDMO Solutions

- >30 years of microbial experience
- >98% batch success clinical and commercial 2-5 KL
- >98% RFT in global PD demonstration runs
- >160 proteins expressed
- >200 microbial processes developed
- >2,500 cGMP batches created
- >2,000 strains created



Escherichia coli



Pichia pastoris



Saccharomyces cerevisiae

Proven Technology: Producing Industry-Leading Titers



Paveway PLUS is our innovative, antibiotic free, proven technology for the efficient microbial expression of secreted, soluble and insoluble therapeutic proteins. Provides:

- Fast, reliable, and cost-efficient route to lead strain selection (4 weeks based on titer or 10 weeks based on titer and quality)
- Comprehensive evaluation of purified product to generate more quality data to de-risk the development process

Speed and Efficiency: From Gene to GMP to Drug Substance to IND

Gene → GMP Substance

Investigational New Drug

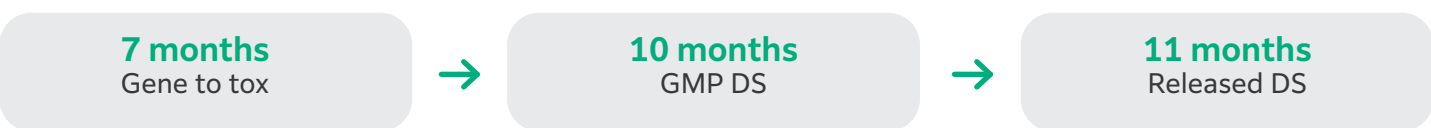
- Phase-appropriately validated analytical methods
- Fully-tested tox material, with Certificate of Testing
- GMP production scales from 100 L to 3,500 L working volume
- Focus on maximizing yield while ensuring product quality



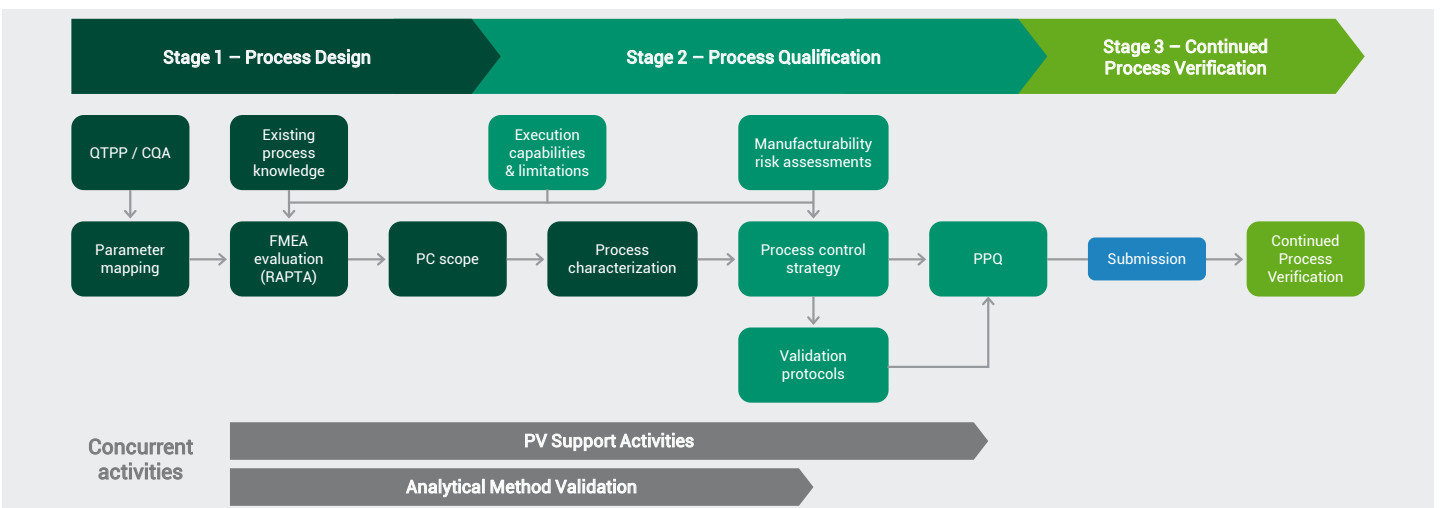
We can work with external drug product providers to seamlessly deliver QC release and stability for your DP, avoiding costly tech transfer of methods.



Data and report formats that are CMC/IND submission ready



Modular and Flexible Approach: Process Characterization to Validation



FUJIFILM Biotechnologies are committed to microbial bioproduction



- \$180M expansion of UK Large Scale Microbial Facility Completed in Q2 2025
- State of the art automation
- Unidirectional material flows
- Designed for high cadence commercial manufacturing
- Options for dedicated capacity to meet primary or secondary source commercial demand

Partners for *Life*

“Partners for Life” represents a transformative approach to development and manufacturing, emphasizing relationships founded on trust and transparency — founded in people-centric values, transformative science and innovation, and unprecedented delivery.

FUJIFILM Biotechnologies
fujifilmbiotechnologies.fujifilm.com

