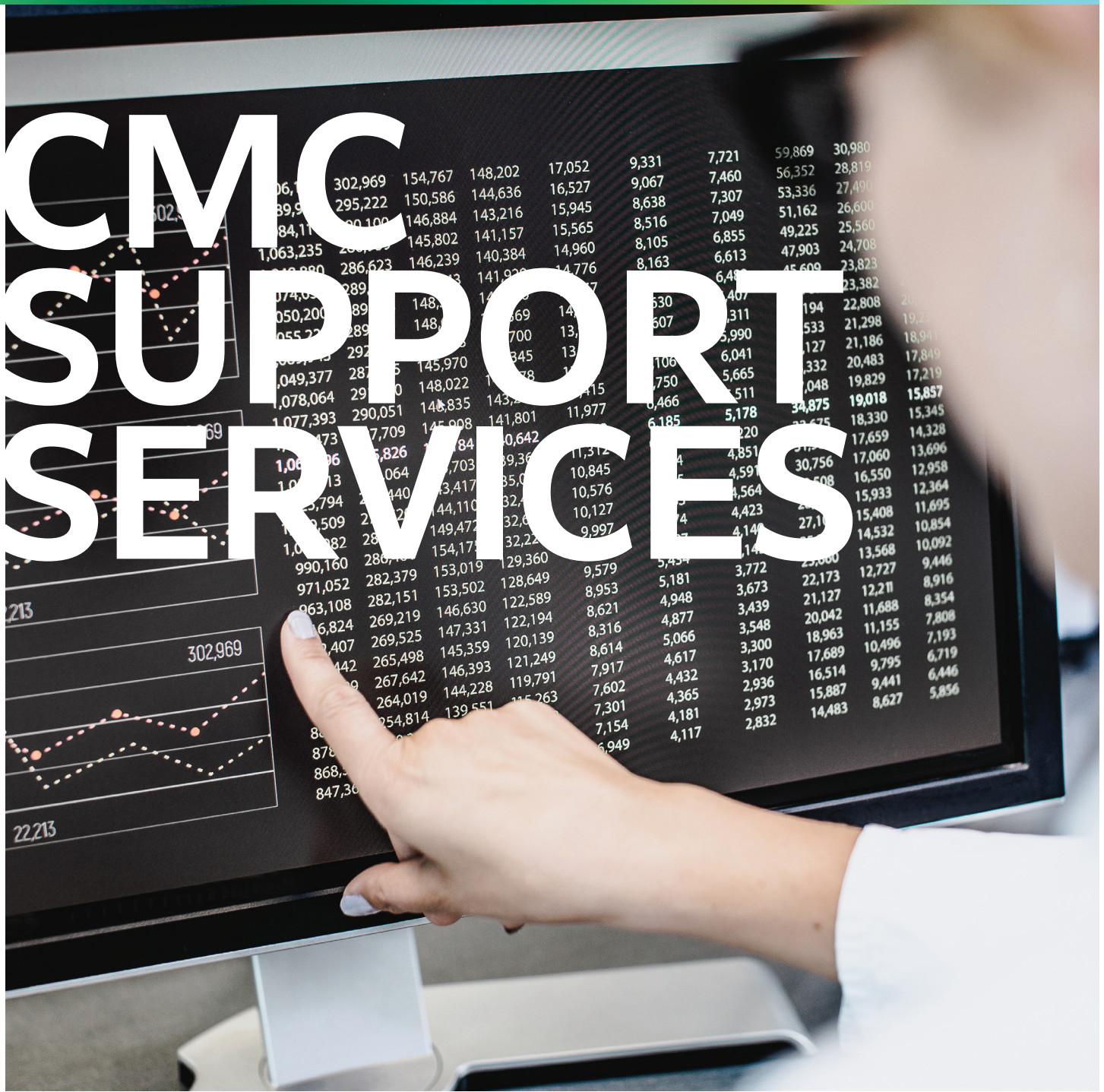
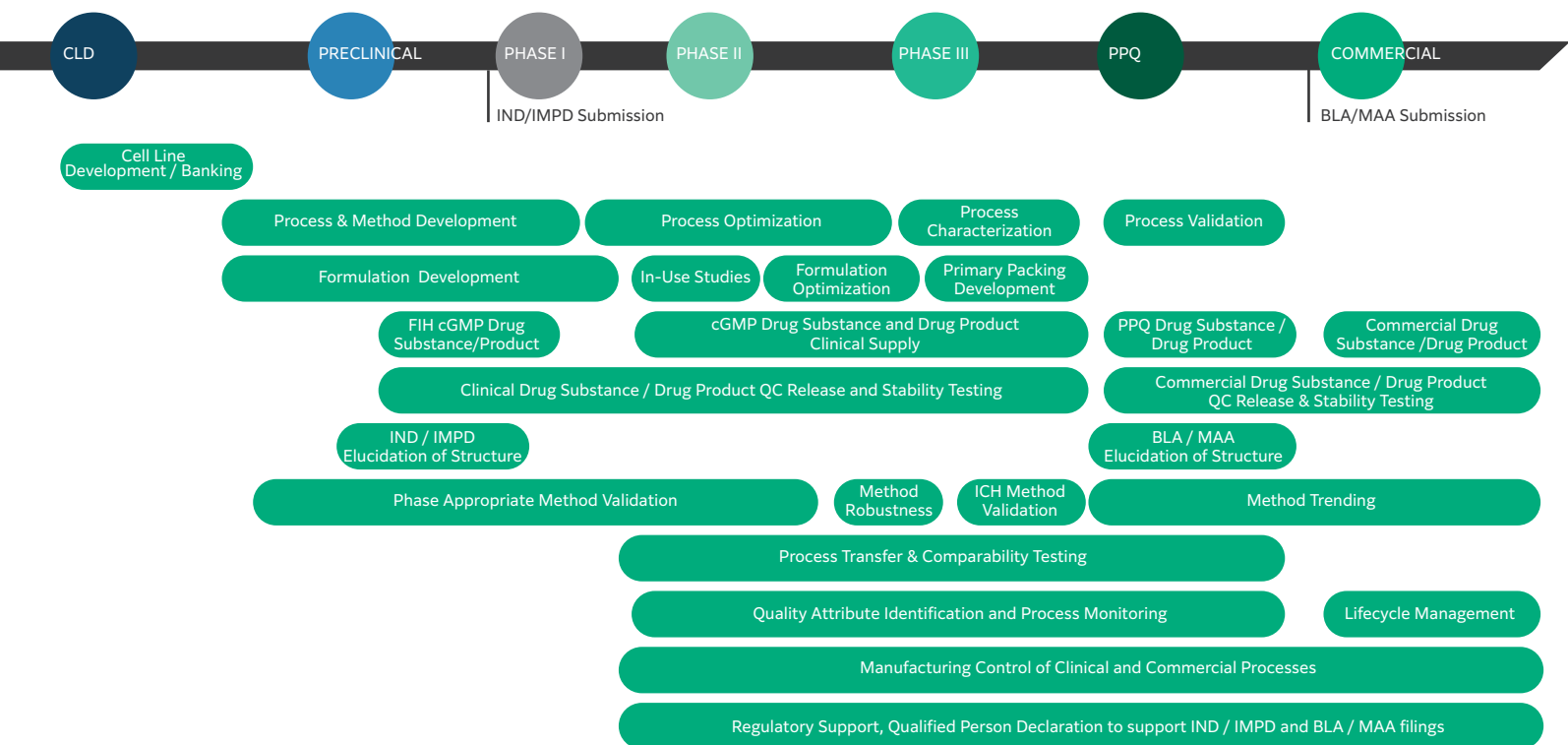


# CMC SUPPORT SERVICES



# Your CDMO Partner For Life With Expert CMC Support Services



## Process Characterization

We understand the criticality of timely and successful process characterization to enable sustained delivery over the life cycle of your molecule. Our global network brings together leading-edge technologies, risk-based study design and efficient work-flows to deliver agile solutions for clients during their journey to commercialization.

## Process Validation

Process Validation is a pivotal lifecycle activity that involves the collection and evaluation of process data and knowledge to establish a defensible control strategy and defines a capable manufacturing process that reliably meets product quality attributes.

## Formulation Development

In the arena of formulation development, the roadmap is composed of molecular information that is collected using innovative, information-rich and scientifically-sound computational, biophysical and biochemical analysis. We provide approval-ready drug substance and drug product formulations with forethought to manufacturability, within rapid timelines.

## Analytical and cGMP Quality Control

Our analytical and quality teams specialize in the development, transfer, and phase appropriate validation of methods to meet the chemistry, manufacturing and controls (CMC) required to assess the physical and chemical characteristics of each product, and to ensure their quality and consistency during manufacturing.

## DS/DP Stability Studies and Testing

Across our entire network we execute both accelerated and long-term stability studies on both drug substance and drug product for mammalian, microbial and advanced therapies products. We offer study design and management coupled with comprehensive reporting to support your regulatory submission process.

## Qualified Persons & Regulatory Support

Our services include IND drafting and CMC module writing including responses to information requests and post approval maintenance. We've worked with our clients to deliver >20 commercial products (6 since 2020), working with multiple regulatory bodies.

**20+**

Years of experience in  
65+ PC programs

**2**

Purpose built  
Lab & Analytical  
facilities / dedicated  
units

**3000+**  
cGMP batches  
for biologics



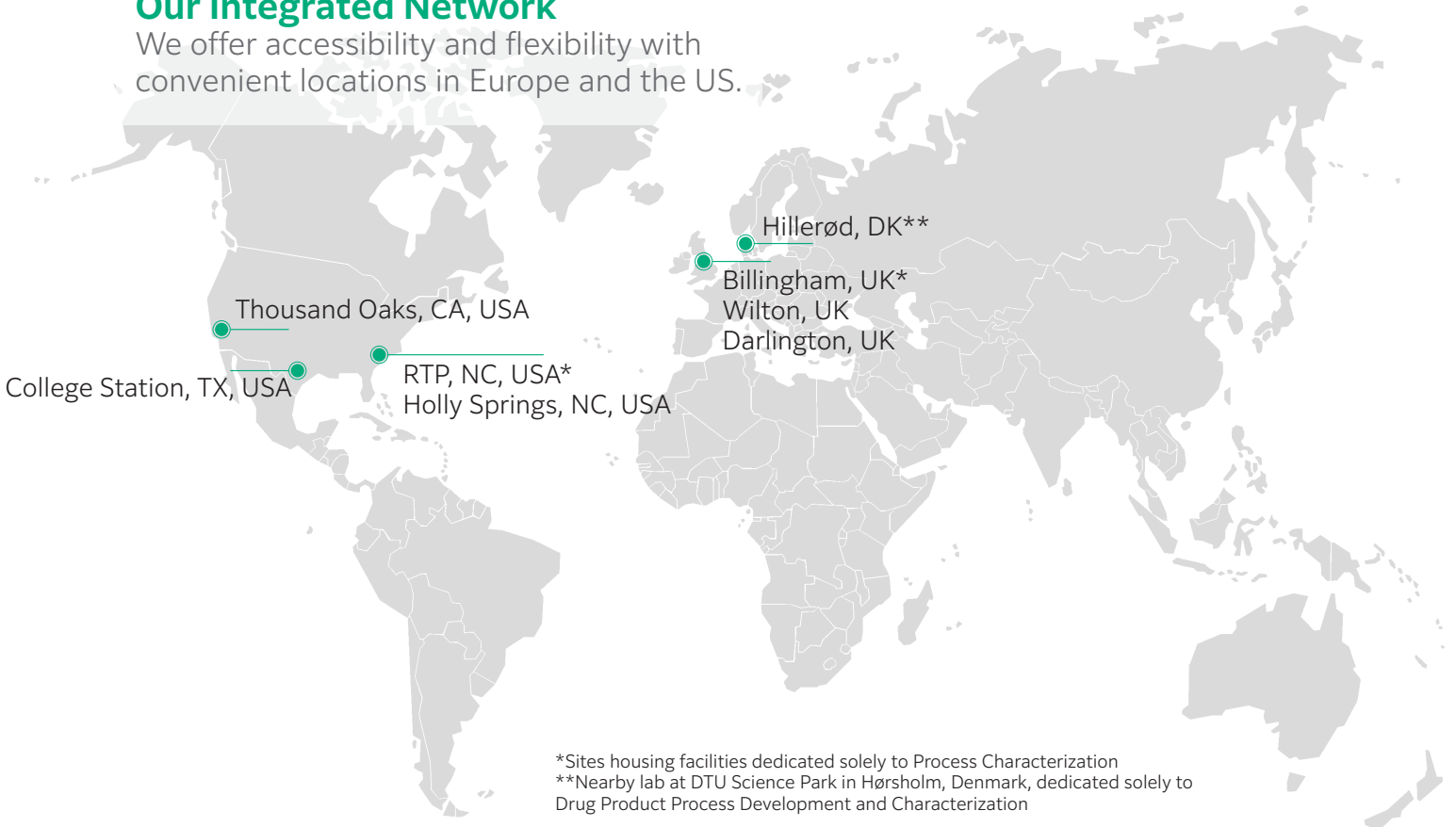
**250+**  
Viral gene therapy  
clinical batches

**\$8.6bn+**  
Invested in global  
facilities and  
advanced technologies

**500+**  
Scientists globally  
sharing expertise

### Our Integrated Network

We offer accessibility and flexibility with  
convenient locations in Europe and the US.



\*Sites housing facilities dedicated solely to Process Characterization  
\*\*Nearby lab at DTU Science Park in Hørsholm, Denmark, dedicated solely to Drug Product Process Development and Characterization

Contact us to discuss your science.

**USA**

College Station, Texas  
3940 Fujifilm Way  
College Station, TX 77845  
+1 979 431 3500

**USA**

Holly Springs, North Carolina  
100 Biotechnology Avenue  
Holly Springs, NC 27540  
(Coming online 2025)

**USA**

Research Triangle Park,  
North Carolina  
101 J Morris Commons Lane  
Morrisville, NC 27560  
+1 919 337 4400

**USA**

Thousand Oaks, California  
2430 Conejo Spectrum Street  
Thousand Oaks, CA 91320  
+1 805 699 5579

**DENMARK**

Hillerød  
Biotek Allé 1  
3400 Hillerød  
+45 7741 6000

**UNITED KINGDOM**

Teesside  
Belasis Avenue  
Billingham, TS23 1LH  
+44 1642 363511

**JAPAN**

Tokyo  
R7 Building, 7-12-2 Roppongi  
Minato-ku, Tokyo 106-0032  
+81 3 6871 7736



[fujifilmbiotechnologies.fujifilm.com](https://fujifilmbiotechnologies.fujifilm.com)

Partners for *Life*

© All Rights Reserved 2025

